

Study Information

We are studying a condition called “Post-Operative Cognitive Dysfunction,” or POCD. For some people who have total knee replacement surgery, memory and thinking changes occur temporarily. We want to know why this occurs.

Consequently, we are running a very controlled longitudinal research study that has two groups of people: 1) people who have elected a total knee replacement surgery; and 2) people with osteoarthritis who are not having knee replacement surgery.

We greatly need people who have knee pain related to osteoarthritis but are not having a planned surgery within the next year.

By contributing your time (four separate meetings with us throughout a year), you can help us understand why some people who have total knee replacement experience temporary memory and thinking problems.

Contact Information

For more information contact:

**Catherine Price, Ph.D. or
Donna Weber, B.A.**

Phone: 352-273-5929

Email: dhweber@phhp.ufl.edu

Visit our website:

<http://pricelab.phhp.ufl.edu>

**This study is funded by the
National Institutes of
Health**

NIH website:

<http://www.nih.gov>

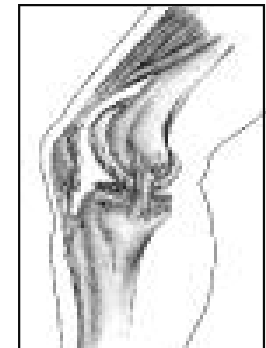


UF UNIVERSITY of
FLORIDA

**Are you 60
years of age or
older?**

**Do you have
knee pain
related to
osteoarthritis?**

**If so please read
this brochure.**



**Contact: Catherine Price, Ph.D.
or Donna Weber, B.A.
352-273-5929**

APPROVED

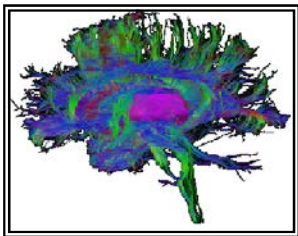
ON 10/31/13

2013

Who we are looking for

Healthy individuals who:

- √ Are at least 60 years of age
- √ Have knee pain related to osteoarthritis.
- √ Are not planning a major surgery over the next year.
- √ Can meet with us four times during one year (can be at your home).
- √ Can have a brain magnetic resonance imaging scan (for example, not claustrophobic, no pace makers, no neurostimulators).
- √ Are relatively healthy.
- √ Have no history of a diagnosed learning disorder (dyslexia).



What the study involves

Thinking/Memory Tasks:

- Ψ You will complete four separate three hour thinking and memory sessions in a comfortable environment. This can be done at your home or our location.

MRI:

- Ψ You will complete two separate brain magnetic resonance imaging scans. The pictures acquired will allow us to look at white matter fibers (see figure), gray matter brain regions, and how your brain is functioning. Your pictures will be compared to the patients who are involved in the surgery comparison group.

Blood Draw:

- Ψ A fasting blood draw so we can measure markers of disease that may alter brain function over time.



What we provide

- ⇒ You will be provided with compensation for your travel to and from the testing site at Shands Hospital, meals during your visit, as well as a monetary thank you for your time.
- ⇒ To make participation convenient, we will be happy to travel to your home to discuss the study and complete the thinking/memory tests.
- ⇒ We will be happy to discuss the study with you either on the phone, or at your home.
- ⇒ Participants who meet study criteria and who reside outside of the Gainesville area will be provided with local accommodations to help with travel costs.